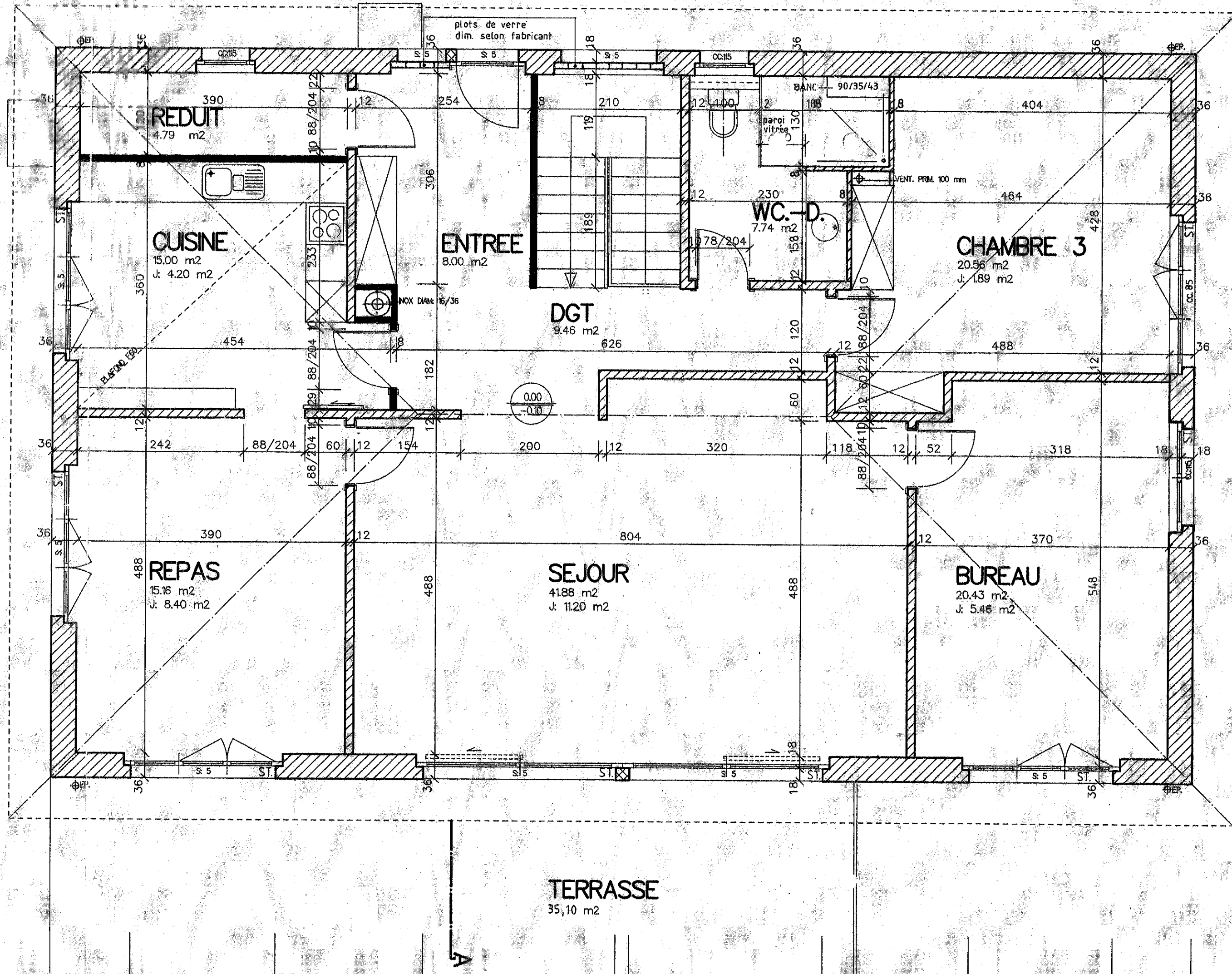


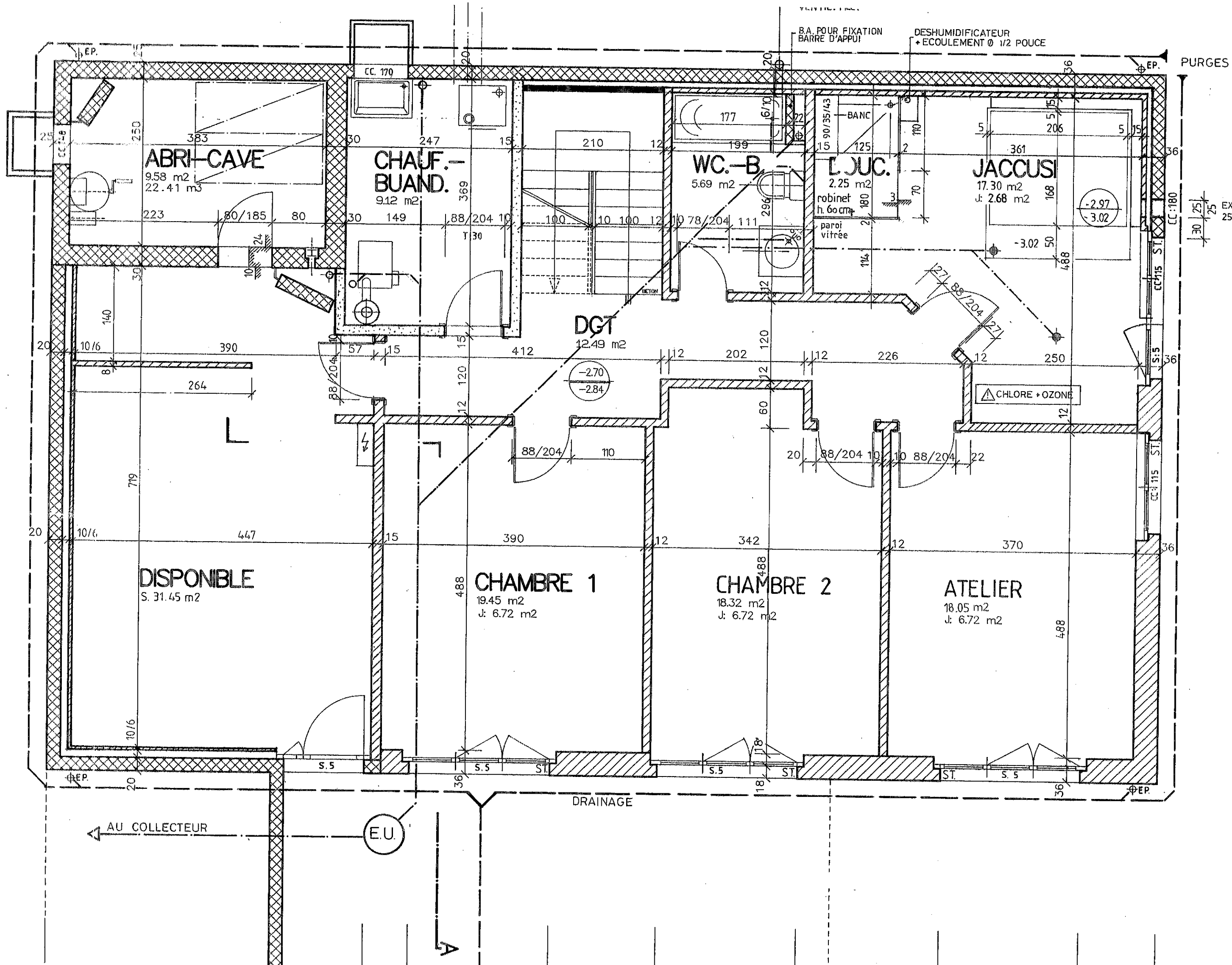


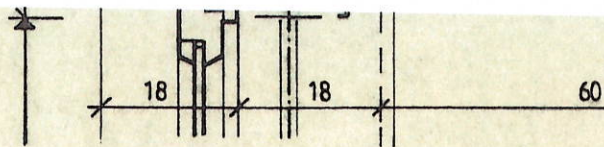
Echelle 1:500



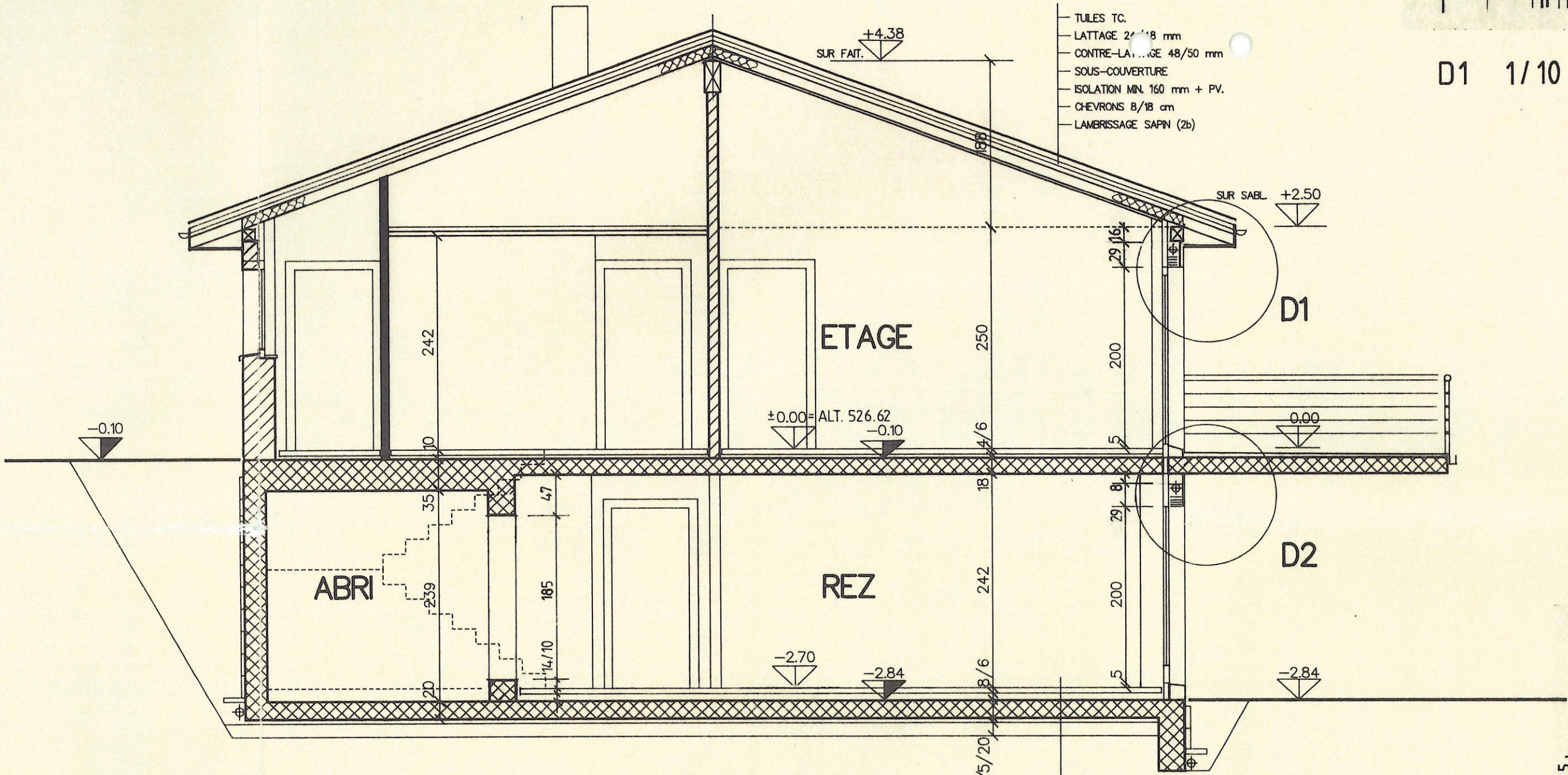
0 5 10 15m





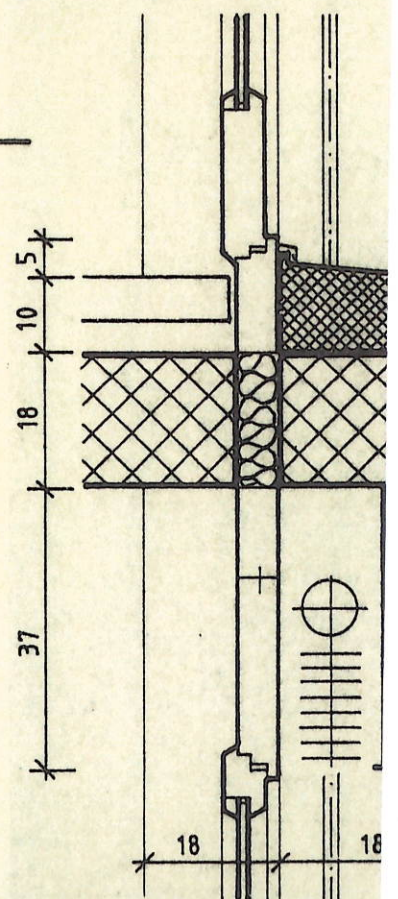


D1 1/10

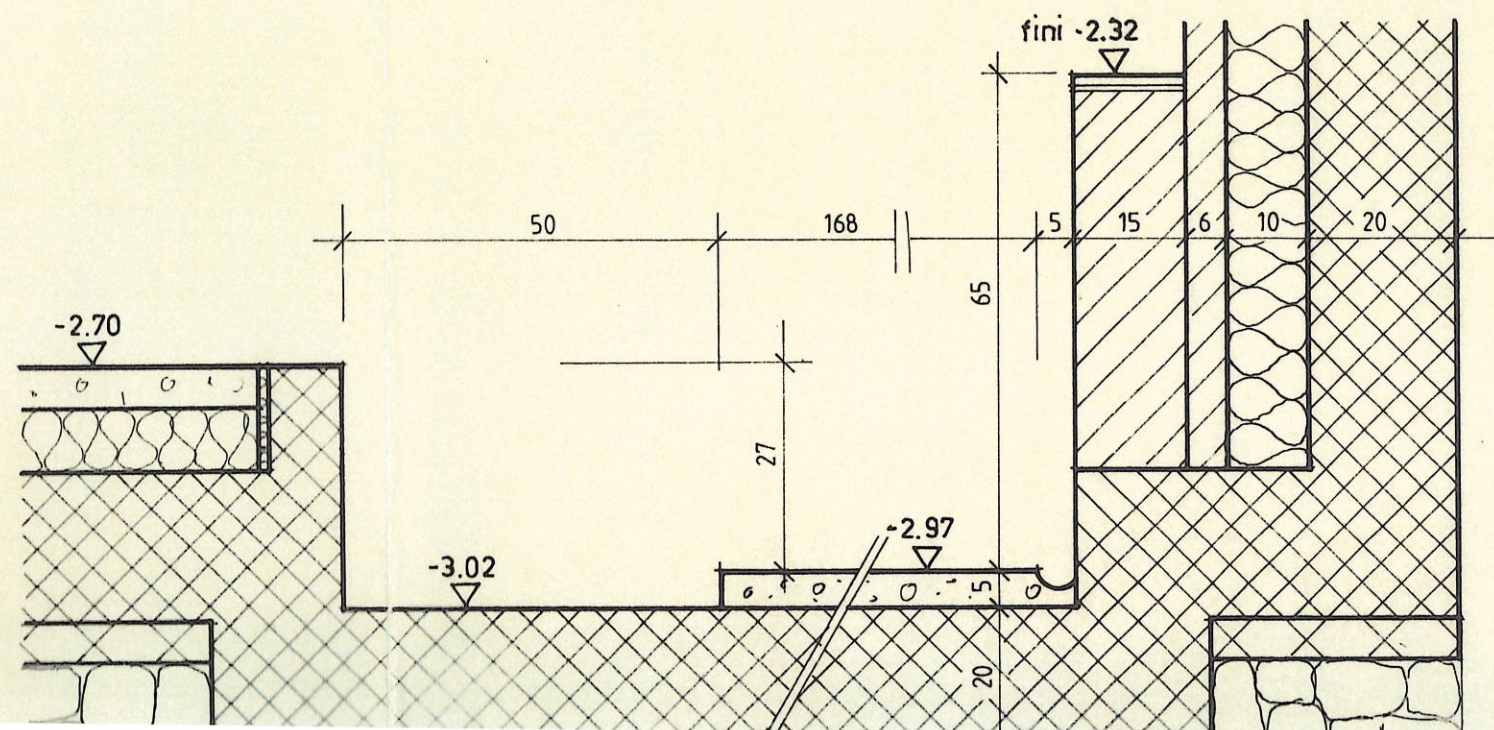


- TILES TC.
- LATTAGE 24/18 mm
- CONTRE-LATTAGE 48/50 mm
- SOUS-COUVERTURE
- ISOLATION MIN. 160 mm + PV.
- CHEVRONS 8/18 cm
- LAMBRISSAGE SAPIN (2b)

- REVETEMENT
- CHAPE CIMENT 60 mm
- ISOLATION 80 mm
- V60
- RADIER B.A. 20 cm
- BETON MAIGRE 5 cm
- TOUT-VENANT 15 cm

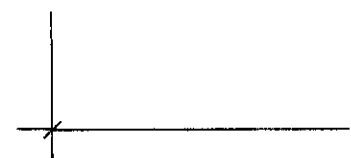


D2 1/10

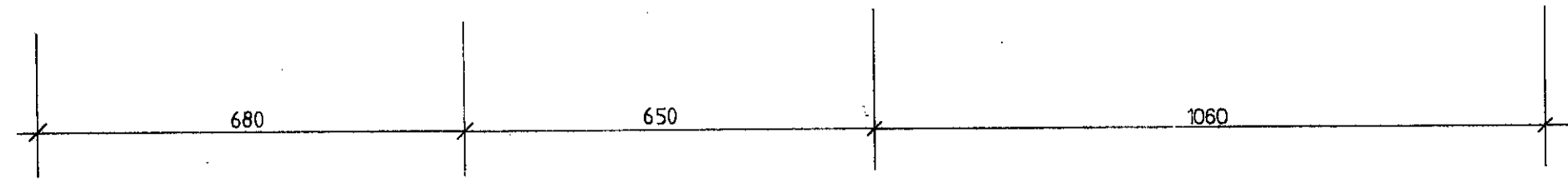
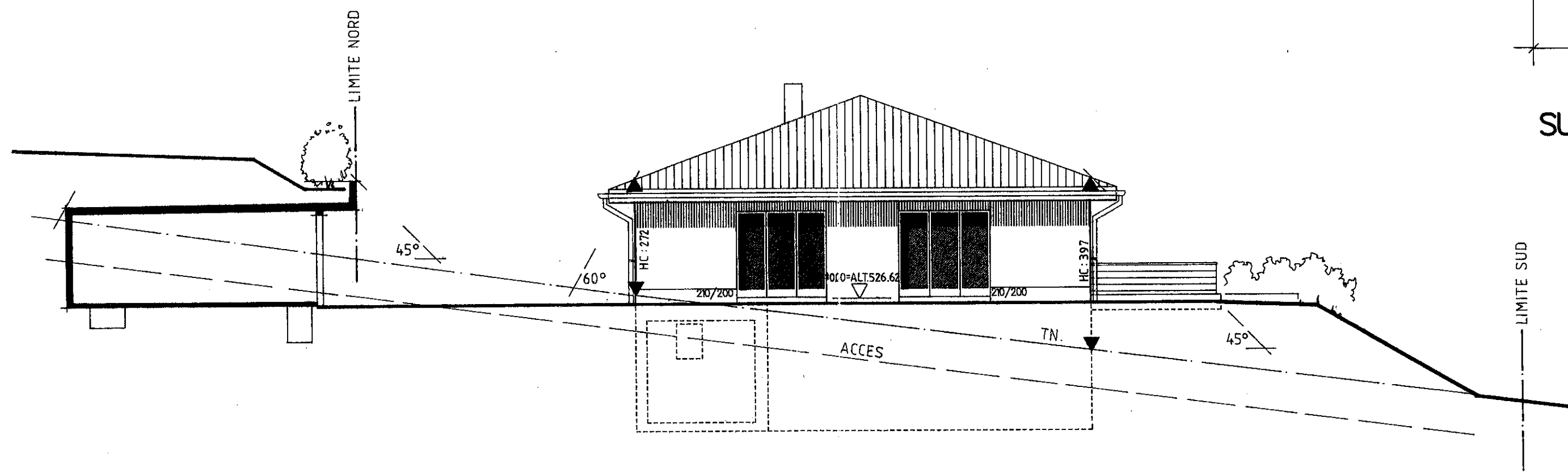


ESI

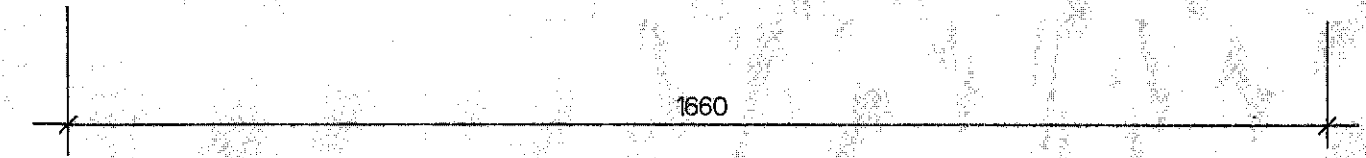
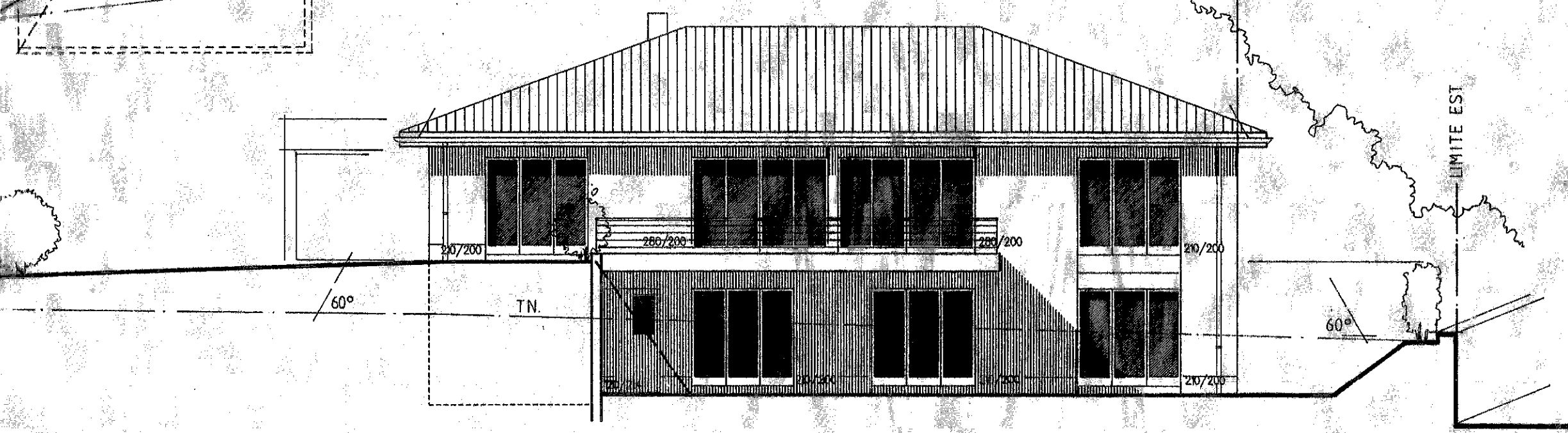
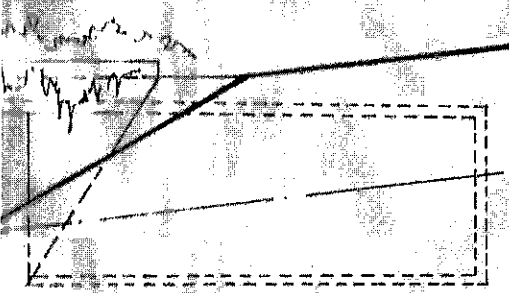
1



SUD

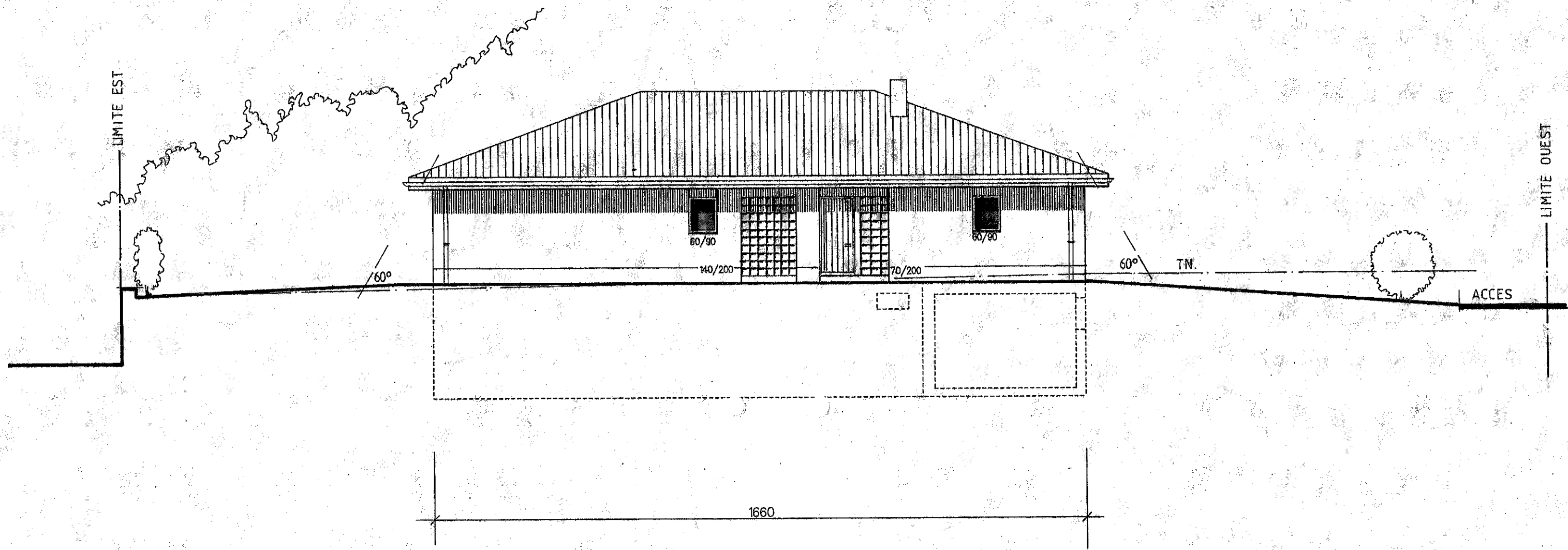


OUEST



SUD





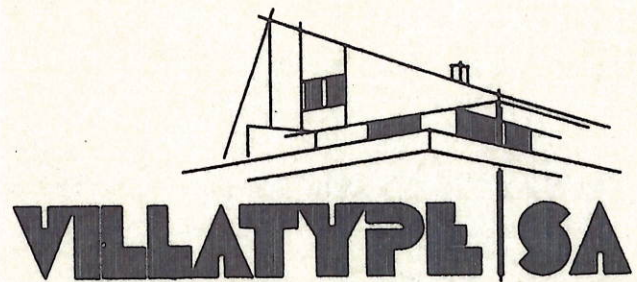
- LIMITE NORD

NORD

T

CONSTRUCTION D'UNE VILLA FAMILIALE, 2012 AUVERNIER

Mme et M. J. PERNET



LE MAITRE DE L'OUVRAGE

h. Pernet
Ruesch

PLAN : FACADES

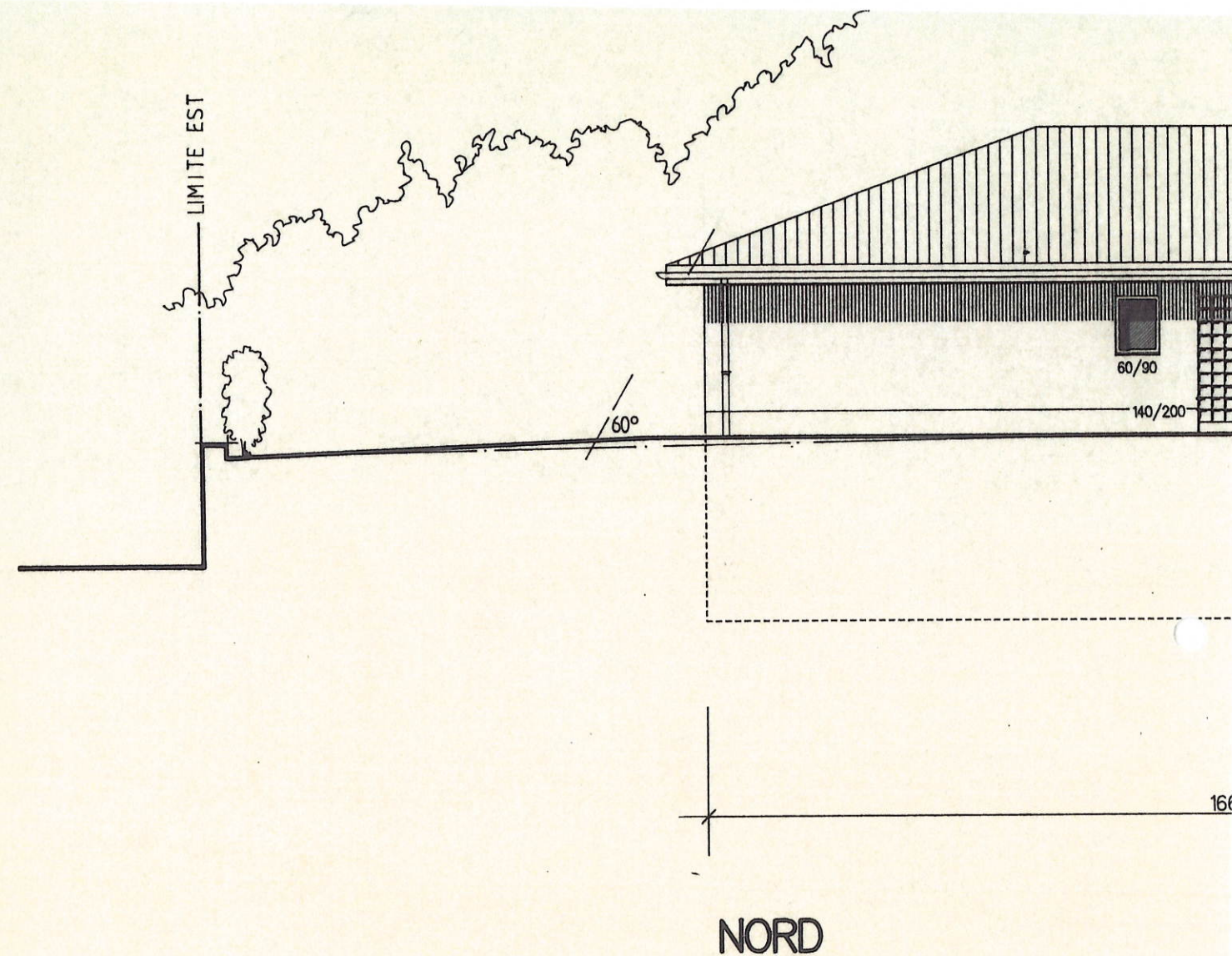
ECH. : 1/100

DESS. LE : 31/01/1997 25/06/97
MODIF. LE : 11/02/1997 27/06/97
24/03/1997
14/04/1997

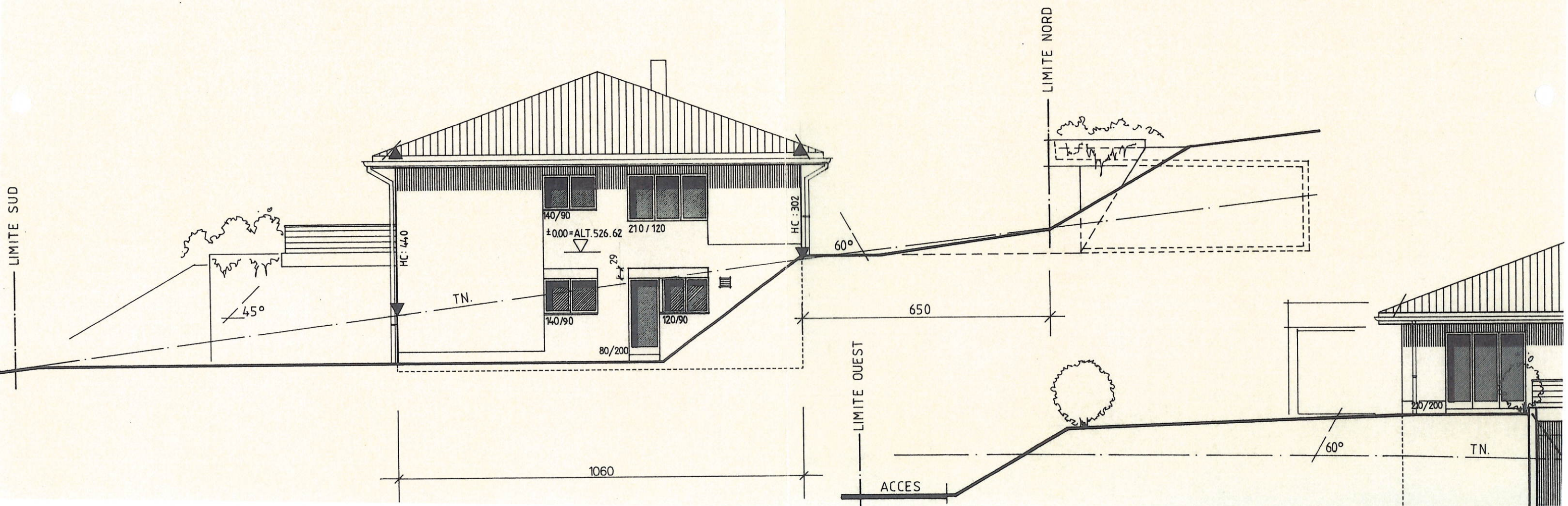
ATELIER D'ARCHITECTURE CHATELARD 9

2052 FONTANEMELON TEL 032 / 853 40 40

L'ARCHITECTE
C-A RUESCH



NORD



1060

ACCES

T.N.